

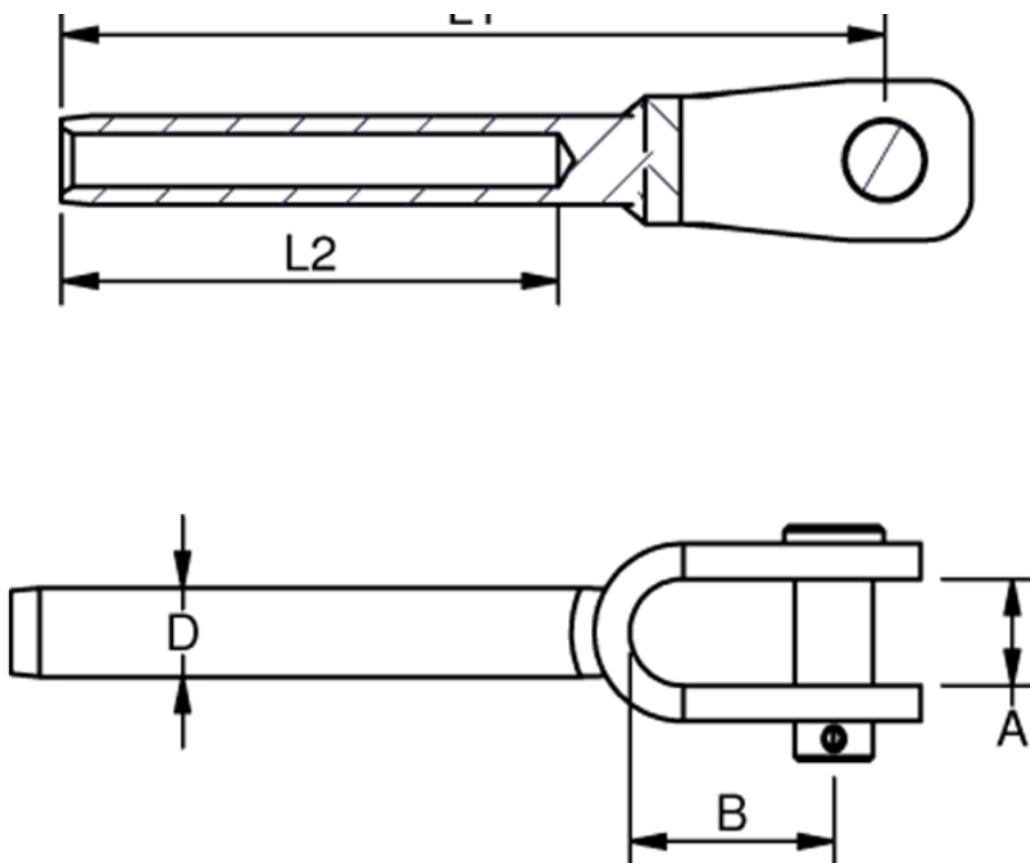


WELDED FORK TERMINALS

Polished Stainless Steel – AISI 316



TECHNICAL DRAWING



DATA TABLE

WELDED FORK TERMINALS

ART. NO.	WIRE	PIN	A	B	D	L1	L2	BL/KG	KG/100	PACK	
100502	2	1/16"	5	7.5	12	5.5	50	24	800	2	25
100525	2.5	3/32"	5	7.5	12	5.5	53	27	800	2	25
100503	3	-	5	7.5	12	6.35	67	38	800	2.3	25
100532	-	1/8"	5	7.5	12	6.35	68	38	800	2.3	25
100603	3	-	6	9.5	13	6.35	68	38	1300	2.8	25
100632	-	1/8"	6	9.5	13	6.35	68	38	1300	2.8	25
100504	4	5/32"	5	7.5	12	7.5	71	45	800	2.7	25
100604	4	5/32"	6	9.5	13	7.5	73	45	1500	3.4	25
100804	4	5/32"	8	11	15	7.5	77	45	1700	4.9	25
100605	5	3/16"	6	9.5	13	9	83	51	1500	4.1	25
100805	5	3/16"	8	11	15	9	87	51	2400	5.5	10
109505	5	3/16"	9.5	12	19	9	91	51	2400	7.2	10
100806	6	-	8	11	15	12.58	99	64	3200	10	10
109506	6	-	9.5	12	19	12.58	104	64	3800	11.3	10
101206	6	-	12	14	25	12.58	110	64	5200	17.6	10
101207	7	9/32"	12	14	25	14.2	119	70	6500	18.1	10

ART. 08 NO.	6 WIRE	5/16"	12 PIN	14 A	35 B	16 D	136 L1	83 L2	6500 BL/KG	31.6 KG/100	10 PACK
101408	8	-	14	18	33	16	143	83	8000	32.5	10
101608	8	5/16"	16	17	33	16	145	83	8000	25.5	10
101410	10	-	14	18	32	17.8	151	89	9400	35	10
101410L	10	-	14	22	30	17.8	149	89	9400	36	10
101610	10•	-	16	17	33	17.8	149	89	9400	36.6	10
101910	10•	-	19	24	48	17.8	168	89	9400	47.7	5
101612	12	-	16	17	33	20	174	105	11200	60	5
101612L	12	-	16	22	31	20	171	105	11200	60	5
101912	12	-	19	24	48	20	189	105	11200	66	5
101912L	12	-	19	30	47	20	187	105	11200	66	5
101912X	12	-	19	24	48	21.4	205	120	14000	75	5
101914	14	-	19	24	50	25	221	140	15000	75	5
101914L	14	-	19	30	47	25	221	140	15000	75	5
102214	14	-	22	30	57	25	232	140	15000	112.7	5
102216	16	-	22	30	57	28	260	160	19400	141	5
102514	14	-	25.4	30	62	25	235	140	15000	125	5
102516	16	-	25.4	30	62	28	264	160	19000	140	5
102819	19	-	28	32	68	34.5	309	200	27000	246	BULK
102820	20	-	28	32	38	34.5	309	200	25000	244	BULK
103222	22	-	32	35	76	40.5	354	230	34000	372	BULK
103526	26	-	35	40	86	46	420	280	45000	548	BULK

*: Note:
Terminal
OD =
21,4