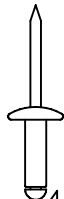
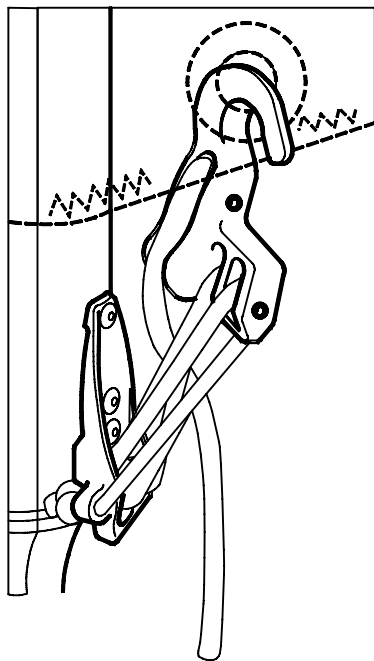




Ø 3–5mm  
1/8"– 3/16"



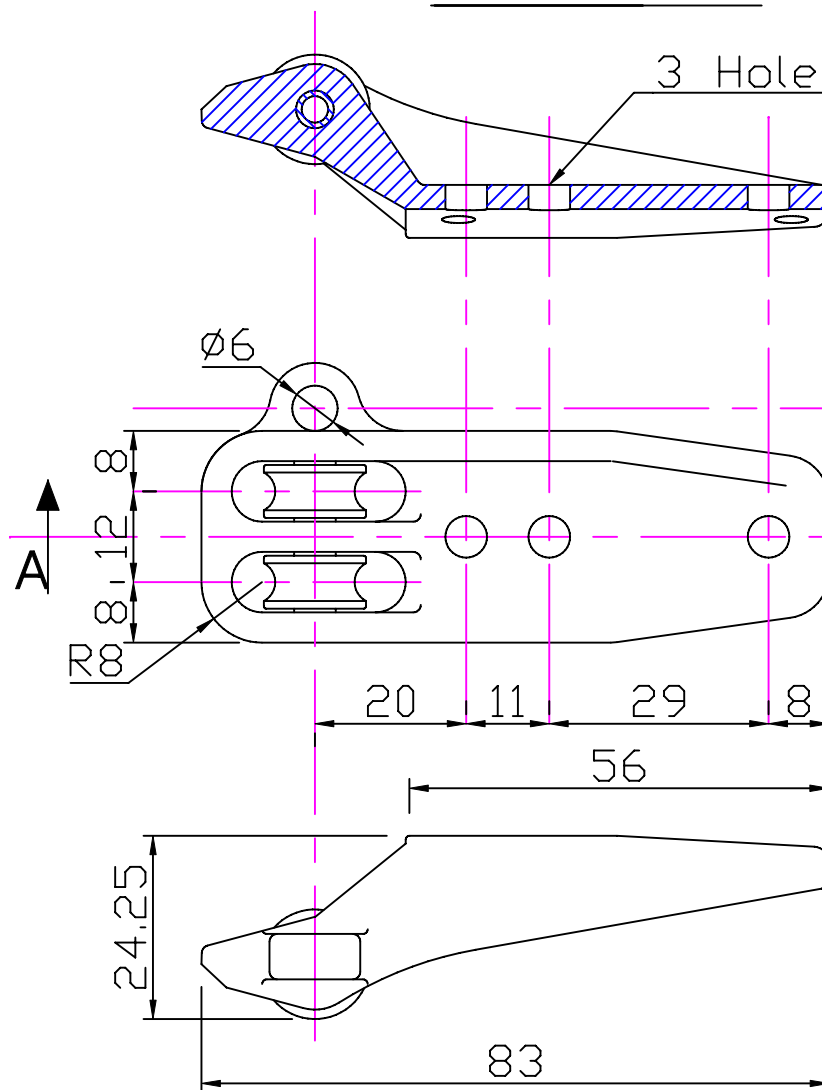
4.8mm  
3/16"



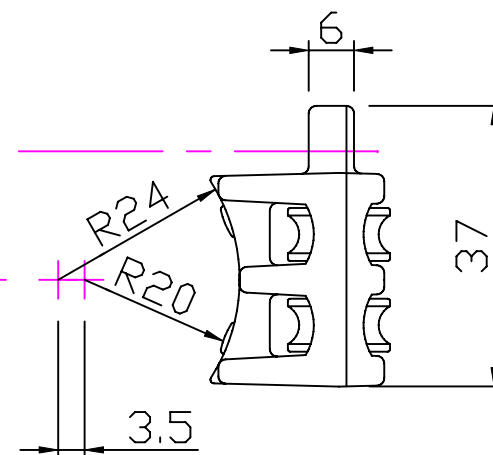
Application 6:1  
CL708 + CL248

## Section 'AA'

3 Holes Ø5.5



Notes: –  
For marine applications, use  
a silicone sealant or a  
bedding compound to avoid  
electrolytic action between  
the cleat and metal  
fastenings.



Issue: 2. May 2006  
ID708.dwg

Material:  
Cleat – Diecast Aluminium  
Roller – Reinforced Nylon

Installation Drawing for:–  
**CL708**  
Rivet-on Fitting  
for 6:1 Ratio



Clamcleats Limited  
Watchmead  
Welwyn Garden City  
Hertfordshire AL7 1AP  
England

Telephone +44 (0)1707 330101  
Fax +44 (0)1707 321269  
<http://www.clamcleat-rope-cleats.com>



Scale 1:1  
All dimensions in mm.